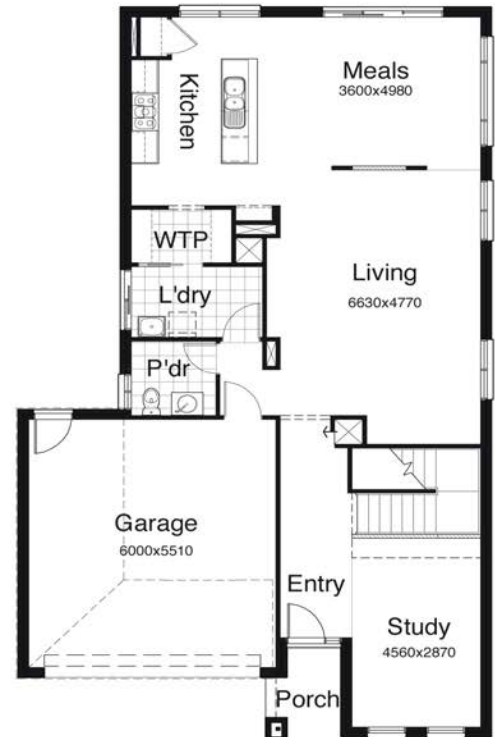


Home & Land Package



Classic facade



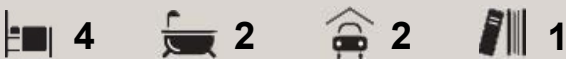
Freeman 3100

Lot 1315 Kingsbridge Boulevard, Williams Landing (Williams Landing)

The double storey slimline design is created to enhance your living experience through three large separated living areas, cleverly optimised space and fabulous indoor/outdoor entertaining

\$547,900*

Even less with FHOg if applicable



- House and Land (400 m2)
- Site Cost Allowance
- Carpet and Tiles
- Concrete Drive and Path
- 20mm Kitchen Stone Bench Tops
- Light Fittings
- Remote Garage Door
- Finance Solutions Available

Consultant Charles Bamford 0414 381 333



■ call 13 BURBANK (13 2872) ■ visit burbank.com.au