



52 display homes
One inspiring location



Welcome to Williams Landing

Everything within reach

“The future town centre was a big attraction because we enjoy having cafes and shopping within walking distance”

Tricia Russel



Williams Landing Sales Centre
52 De Havilland Circuit, Williams Landing
Melway ref 203 J8
p 1300 11 22 02
w www.williamslanding.com.au

Opening Hours
7 days, 11am – 5pm

Just 19kms from Melbourne's CBD, Williams Landing offers an exciting new lifestyle with everything at your fingertips. With a major town centre, transport facilities, parks and a host of amenities, you won't find a better address for your new dream home.

Your guide to 15 premier builders

Inspiration Display Village is one of Melbourne's largest collections of contemporary display homes. Here you'll find a range of styles and options to help make your dream home a reality. The following guide gives you a snap shot of each of the premier builders on display at Inspiration. Enjoy this exciting experience and we wish you all the very best in choosing your new home.

- | | | |
|--------------|----|---|
| Porter Davis | 1 | ● |
| Simonds | 2 | ● |
| Places | 3 | ● |
| Metricon | 4 | ● |
| Burbank | 5 | ● |
| Carlisle | 6 | ● |
| Urbanedge | 7 | ● |
| Boutique | 8 | ● |
| Greybox | 9 | ● |
| Hermitage | 10 | ● |
| Orbit | 11 | ● |
| JG King | 12 | ● |
| Arban | 13 | ● |
| AV Jennings | 14 | ● |
| Formula | 15 | ● |



Porter Davis

Recognised by the Housing Industry Association (HIA) with an unprecedented 10 Most Professional Builder Awards, Porter Davis has homes to suit every budget, lifestyle and taste. They're renowned for their professionalism, dedicated customer service, innovative designs and leading business practices. They offer guaranteed start and finish dates*, 20-week completion^, independent quality inspections, extended 12-month maintenance and a 7-year structural guarantee.

Display Homes: Porter Davis Prestige: Ivanhoe 33, Cayman 46, Waldorf 48
 Porter Davis Lifestyle: Camberwell 29, Davenport 29, Wembley 35
 Porter Davis Access: Regatta 23, Lisbon 22

Location: Cresswell Avenue, Williams Landing

Opening hours: 7 days, 11am – 5pm

Phone: 1800 PORTER (1800 767 837)

Email: info@porterdavis.com.au

Web: www.porterdavis.com.au



*Start subject to land title and finance availability.
 ^Based on Access and Lifestyle single storey homes.



Simonds

Exceptional quality, outstanding value and comprehensive sales support have seen Simonds become one of Australia's most awarded home builders. Their highly experienced team of engineers, architects and design consultants are all trained to meet Simonds' exacting standards. It's why they've received the MBAV award for Best Display Home between \$300,000 and \$400,000 the last two years running.

Display Homes: Villa Vittoria, Monaco, Cambridge
Location: De Havilland Circuit, Williams Landing
Opening Hours: Monday to Friday 12pm – 5pm, Saturday to Sunday 11am – 5pm
Phone: 03 9931 1831
Email: karl.tschugguel@simonds.com.au
Web: www.simonds.com.au



Places

Places Homes brings you innovative design and peace of mind with site costs included in their base prices, guaranteed site starts and a 20-week build time. They also offer independent quality inspections, termite protection, 5-star energy efficient rating and a 6-year structural guarantee. You can relax knowing your home will be built by a reputable and trusted builder with no hidden costs. Places was recently nominated for the Housing Industry Association & Herald Sun Home Magazine Reader's Choice Award.

Display Homes: Rockview 23, Drysdale 30, Highett 42
Location: Delaney Boulevard, Williams Landing
Opening hours: 7 days, 11am – 5pm
Phone: 1300 Places (1300 752 237)
Email: info@placeshomes.com.au
Web: www.placeshomes.com.au



Metricon

Metricon design outstanding homes that celebrate family and lifestyle and always offer outstanding value for money. A home that you can customise and create, backed by over 30 years of experience, a quality assurance program and rock solid 25 year structural guarantee. As one of Australia's most celebrated home builders, they have a proud history of award winning designs. In 2010, Metricon were awarded Australian Display Home of the Year at the National HIA Awards.

Display Homes: Kubis 30 Breeze, Talbot 28 Vogue, Riva 37 Nuvo, Fortitude 37 Pagoda
Location: Creswell Avenue, Williams Landing
Opening Hours: 7 days, 11am – 5pm
Phone: 03 8360 9720
Web: www.metricon.com.au



Burbank

Integrity, passion, experience, quality, innovation and sustainability. These are the hallmarks of Burbank. A family owned business for over 25 years, Burbank is committed to making your dream home a reality. From high-end opulence to earth-friendly designs, they have homes to suit every lifestyle. Their range of expertise also includes electrical, plumbing and transport. Recent awards include 2008 Delfin Lend Lease Grand Masters Awards, Sustainability Excellence and 2008 HIA-CSR Victorian Housing Awards Energy Efficient Project Home of the Year.

Display Homes: Forrester 4300, Durham 3800, Deakin 1800, Freeman 3100
Location: Lindholme Way, Williams Landing
Opening Hours: Monday to Friday 12pm – 5pm; Saturday & Sunday 11am – 5pm
Phone: 03 9328 0361
Email: enquiries@burbank.com.au
Web: www.burbank.com.au



Carlisle Homes

Award-winning design, construction and a real commitment to service ensure every Carlisle home is of the highest quality. Carlisle offers intelligent solutions for the optimum use of space, catering for all sizes of blocks. Carlisle's two product ranges – the luxurious Affinity Collection and the value T Range include a range of extras to deliver contemporary luxury at a lower price. It's how they won the MBAV 2009 award for Best Display Home Under \$175,000 and for Best Display Home between \$175,000 and \$250,000.

Display Homes:

T Range: Newington 36, Montana 29, Westbury 26

Location: 11–15 Lindholme Way

Opening Hours: 7 days, 11am – 5pm

Phone: 03 9931 0424

Email: richards@carlislehomes.com.au

Web: www.carlislehomes.com.au



Display Homes:

Affinity Collection: Haven 35, Lexington 45, Montrose 36

Location: 12–16 Delaney Blvd

Opening Hours: 7 days, 11am – 5pm

Phone: 03 8368 2991

Email: rjp@carlislehomes.com.au

Web: www.carlislehomes.com.au



Urbanedge Homes

Urbanedge Homes have a street presence and style like no other. They offer an alternative that is contemporary, distinctive and visionary in its architecture, with real transparency and value for money. They can accommodate your needs and budget with flexible options that suit you best. And you'll find all the services you need under one roof, from design experts to finance professionals. Their care, passion and energy runs right through the core of their business, ensuring your experience with Urbanedge is as rewarding as the lifestyle their homes provide.

Display Homes:

Yoki 004, Uber 003, Sogo 003

Location: 16–20 Cresswell Ave, Williams Landing

Opening Hours: Saturday to Wednesday 11am – 5pm

Phone: 03 9369 9539

Email: williamslanding@urbanedgehomes.com.au

Web: www.urbanedgehomes.com.au



Boutique Homes

You'll appreciate the boutique difference the moment you walk through the door. Stylish and sophisticated yet built to withstand the day-to-day, Boutique Homes are architecturally designed with you in mind. Boutique have a unique Clear and Simple pricing policy where the specification and cost of each home is communicated upfront, making it easier for you to manage your decisions and budget. A 25 year structural and building guarantee will give you peace of mind ensuring commitment to you. Alpine Villa 29 is currently a contender for the HIA Readers Choice award.

Display Homes: Verve 41, Alpine Villa 29
Location: 18 & 20 Delaney Boulevard, Williams Landing
Opening Hours: 7 days, 12pm – 5pm
Phone: 03 9674-4555
Email: enquiries@boutiquehomes.com.au
Web: www.boutiquehomes.com.au



Greybox Homes

Greybox Homes offers the finest quality homes at affordable pricing. They pride themselves on including standard items which others call extras. You have the choice of 90 floor plans to suit your lifestyle and budget. They can also custom-design plans to ensure your every need is met. A superior product is only as good as the company standing behind it. This is why Greybox Homes provides superior customer care during the sale, throughout construction and of course, after you've moved into your new home.

Display Homes: Colbot and Marina
Location: 22 & 24 Delaney Boulevard, Williams Landing
Opening Hours: Everyday 11am – 5pm except Thursday (closed)
Phone: 03 8390 6333
Email: info@greyboxhomes.com.au
Web: www.greyboxhomes.com.au



Hermitage Homes

Hermitage Homes have been building quality homes across Victoria since 1997. The Hermitage brand is based on four key principles: stylish design, unbeatable service, attention to detail and outstanding value. Hermitage Homes have quickly developed into one of Australia's fastest growing housing companies, recognised in the BRW Fast 100 three years running. They specialise in providing an all-inclusive product that includes full landscaping, window furnishings, driveways, air conditioning and even the clothesline.

Display Homes: Verdelho 322, Shiraz 247
Location: 17 & 19 Cresswell Avenue, Williams Landing
Opening Hours: Saturday to Wednesday, 12pm – 5pm
Phone: 03 9369 1802
Email: kjones@hermitagehomes.com.au
Web: www.hermitagehomes.com.au



Orbit Homes

Orbit Homes is a family-owned company that has been building quality Australian homes since 1978. Their dedication to excellence has been recognised by every major industry body, culminating recently with the Master Builders Association Home of the Year Award. With a team of highly experienced architects, project managers, supervisors, quality controllers and interior designers, you can be sure your new home is in the best hands.

Display Homes: Argyle 21, Veridian 26, Aspect 29
Location: Cresswell Avenue, Williams Landing
Opening Hours: Saturday to Wednesday, 11am – 5pm
Phone: 03 8360 8381
Email: pauln@orbithomes.com.au
Web: www.orbithomes.com.au



JG King Homes

JG King Homes are proud to offer you a wide variety of choice when it comes to creating the home of your dreams. The Alpha collection is ideal for first-home buyers, or choose My Style for tailor-made luxury designs. JG King's patented steel frame comes with a 50-year structural guarantee and they're the only builder to construct all single-storey homes to a 6-Star energy rating at no extra cost. Their 7-Star 'Smart' home is another industry first and they recently received the MBAV best South West Region Display Home \$300,000 to \$400,000 for their Rialton Design.

Display Homes: Paragon 210, Esprit 175, Rialton 260, Crescendo 360
Location: Lindholme Way, Williams Landing
Opening Hours: Monday to Friday 12pm – 5pm, Saturday & Sunday 11am – 5pm
Phone: 03 8360 7048
Web: www.jgkinghomes.com.au



Arban

Founded in 2006, Arban pride themselves on their flexibility of design as well as delivering a unique product, at an extremely competitive price. With collective experience in all areas of the building industry, Arban's three directors thoroughly understand the needs of their customers, providing insights to industry trends and expertise in residential construction. Arban were recently awarded the prestigious Wyndham City Council award for Best New and Emerging Medium-Sized Business 2009.

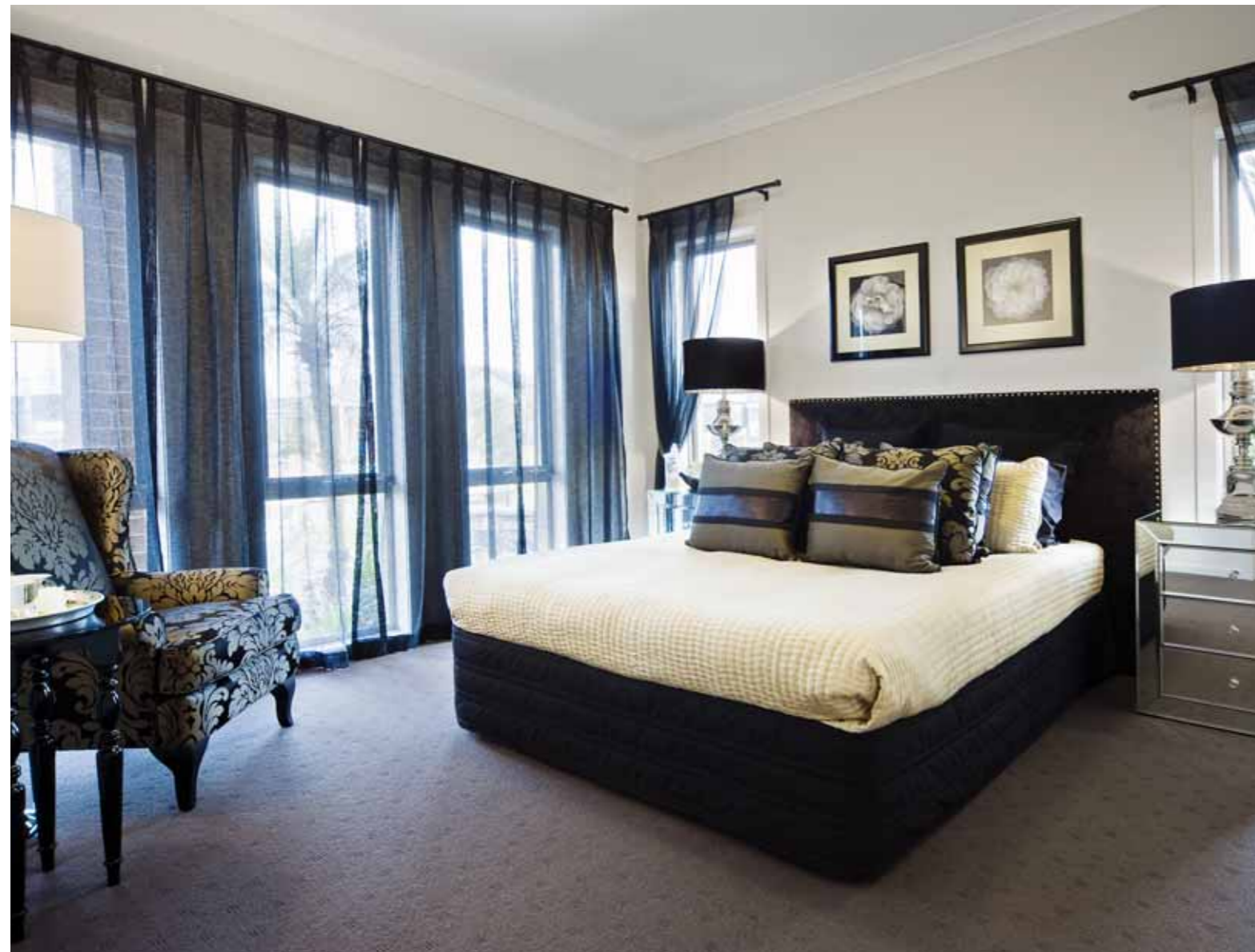
Display Home: Ciara
Location: De Havilland Circuit, Williams Landing
Opening Hours: Saturday to Wednesday 12pm – 5pm
Phone: 03 8368 2025
Email: admin@arban.com.au
Web: www.arban.com.au



AV Jennings

For nearly 80 years, AV Jennings' reputation for uncompromising quality has ensured they've remained one of Australia's most trusted builders. Their large range of inspiring designs, an impressive list of quality inclusions and a choice of facades means you can personalise your home to suit your needs and budget. Their BetterBuild 13-point guarantee gives you peace of mind, and a commitment to superior quality, technology, sustainability and customer service mean they always meet the high standards their customers expect.

Display Homes: Atrium 275, Plaza 381, Sanctuary 281, Seabreeze 234, Villa 189, Meridian 221
Location: Lindholme Way, Williams Landing
Opening Hours: 7 Days, 11am – 5pm
Phone: 03 8360 7281
Web: www.avjennings.com.au



Formula Homes

For 15 years, Formula Homes has created a diverse range of spacious and efficient homes. They specialise in customising designs to better suit your needs, and can also quote on your own architecturally designed plans and even unit developments. Their homes maximise liveability with room to live, laugh and relax. Modern construction techniques and clever thinking ensure you'll get fantastic value and a home that you love.

Display Home: Aryana 37
Location: De Havilland Circuit, Williams Landing
Opening Hours: Saturday to Wednesday, 12pm – 5pm
Phone: (03) 8523 4977
Email: sales@formulahomes.com.au
Web: www.formulahomes.com.au





Inspiration

52 De Havilland Circuit, Williams Landing
Melway ref 203 J8

p 1300 11 22 02
e info@williamslanding.com.au
w www.williamslanding.com.au

